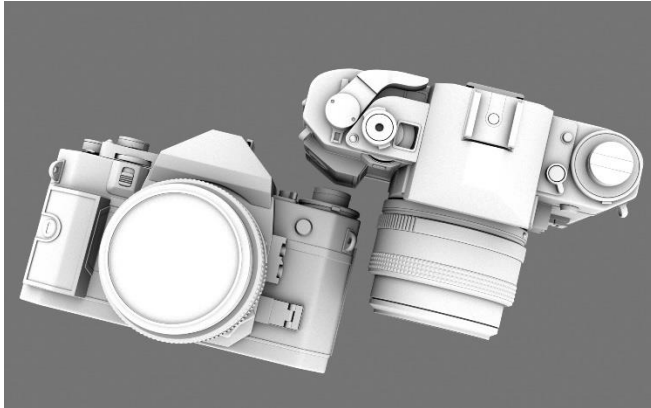




## CLF ADVANCED STUDIES

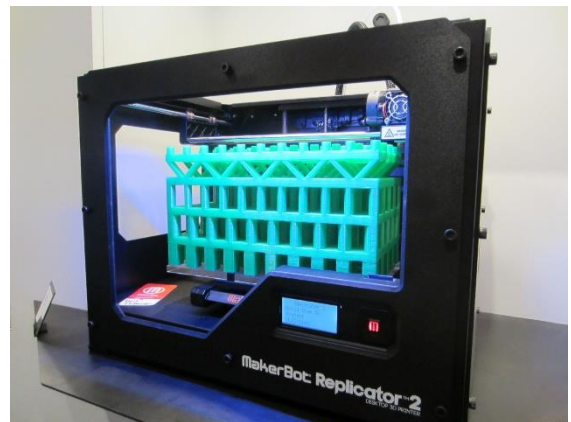
# 3D Modeling & Printing (MS&HS)



This course is designed to teach the essentials of using Autodesk Inventor and 3D printing. Each unit topic will provide you with comprehensive lessons, detailed procedures and lots of projects to apply your knowledge.

Some of the topics covered in this course are: navigating the user interface; using basic sketching techniques; using basic and detailed shape design techniques; an assembly design overview; place, create and constrain components; interact with an assembly; basics of view creation; dimensions, annotations and tables; annotating assembly drawings and drawing standards and resources.

This course will take you through the essentials of 3D printing. We will explore 3D printer hardware and the print process.



**3D Modeling & Printing:** Middle and High School Students, Monday 5.15pm-6.45pm, \$25/per session, Capacity 6 students.

**Dates:** Feb 23, Mar 2, Mar 9, Mar 16, Mar 23, Apr 13, Apr 20, Apr 27, May 4, May 11 (10 Weeks)